

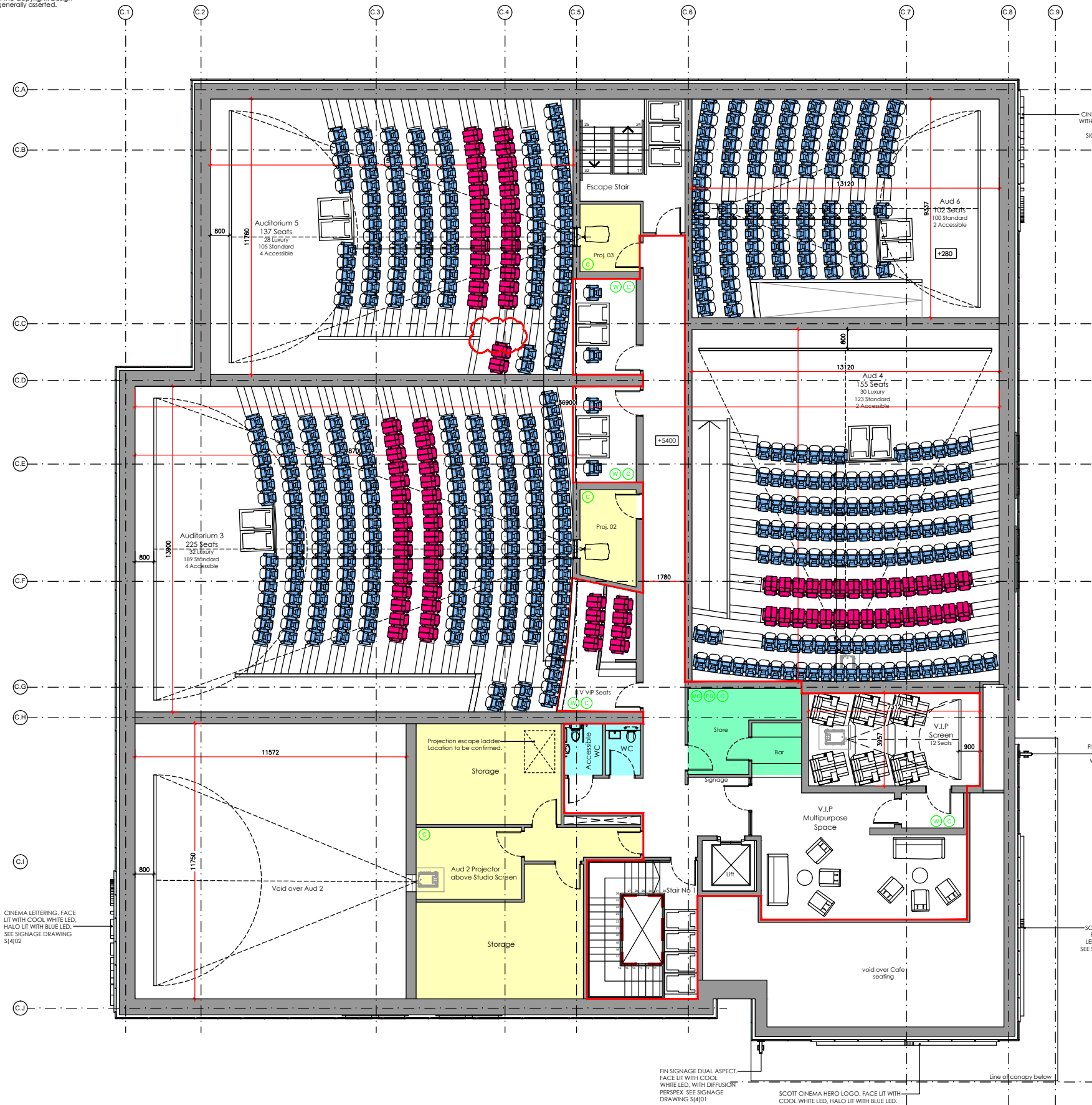
LEGEND

- Area to be used for licensable activities
- Staff only areas
- Public toilets
- Liquor storage areas
- Liquor servery bar countertops

PORTABLE FIRE FIGHTING EQUIPMENT

- 7x8W6SS 6ltr Water Chrome Extinguishers ●
- 7x8C2SS 2kg CO2 Chrome Extinguishers ●
- 7x8C2 2kg CO2 Red Extinguishers ●
- 1x8C5 5kg CO2 Red Extinguisher ●
- 1x8W6MC 6ltr Multi Chem Extinguisher ●
- 1x8FB6x4 Fire Blanket ●

- THE LOCATION OF ANY FIRE SAFETY AND ANY OTHER SAFETY EQUIPMENT IS SHOWN AS AT PRESENT. THIS MAY BE VARIED FROM TIME TO TIME WITH THE AGREEMENT OF THE FIRE SAFETY OFFICER OR AFTER A FIRE RISK ASSESSMENT.
- ANYTHING SHOWN ON THIS PLAN, WHICH IS NOT REQUIRED BY THE PLANS REGULATIONS FOR THE LICENSING ACT 2003, IS FOR ILLUSTRATIVE PURPOSES ONLY AND DOES NOT FORM PART OF THE LICENCE.



UPPER FLOOR PLAN PROJECTION LEVEL



7 SCREEN CINEMA - 754 seats
 MOUNT STREET LEISURE DEVELOPMENT
 BRIDGWATER

CINEMA LETTERING, FACE LIT WITH COOL WHITE LED, HALO LIT WITH BLUE LED, SEE SIGNAGE DRAWING S(4)02

CINEMA LETTERING, FACE LIT WITH COOL WHITE LED, HALO LIT WITH BLUE LED, SEE SIGNAGE DRAWING S(4)02

FIN SIGNAGE DUAL ASPECT, FACE LIT WITH COOL WHITE LED, WITH DIFFUSION PERISPEX, SEE SIGNAGE DRAWING S(4)01

SCOTT CINEMA HERO LOGO, FACE LIT WITH COOL WHITE LED, HALO LIT WITH BLUE LED, SEE SIGNAGE DRAWING S(4)03

FIN SIGNAGE DUAL ASPECT, FACE LIT WITH COOL WHITE LED, WITH DIFFUSION PERISPEX, SEE SIGNAGE DRAWING S(4)01

SCOTT CINEMA HERO LOGO, FACE LIT WITH COOL WHITE LED, HALO LIT WITH BLUE LED, SEE SIGNAGE DRAWING S(4)03



REVISIONS
LICENSE

Proposed Cinema Development
 BRIDGWATER
 WTW - SCOTT CINEMAS
 PROPOSED UPPER LEVEL

5309 - LC_02

DRAWN BY AB CHECKED BY -
 SCALE 1:100 DATE SEPT 2020

UNICK CONSULTING LIMITED
 23 PARK CIRCUS,
 GLASGOW G3 6AP
 TEL: 0141-332 4224
 FAX: 0141-332 4226
 E-mail: info@unick.com

